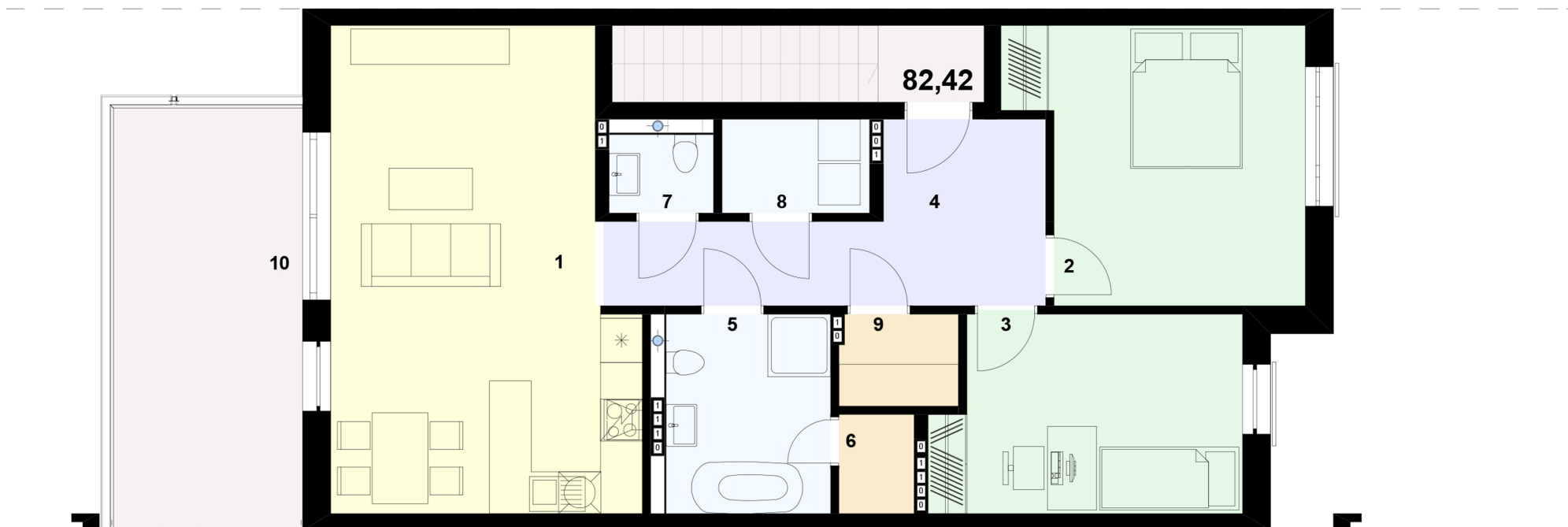


4b



## ZESTAWIENIE POWIERZCHNI

|    |                           |                      |
|----|---------------------------|----------------------|
| 1  | salon z aneksem kuchennym | 28,63 m <sup>2</sup> |
| 2  | pokój                     | 15,44 m <sup>2</sup> |
| 3  | pokój                     | 12,11 m <sup>2</sup> |
| 4  | komunikacja               | 11,16 m <sup>2</sup> |
| 5  | łazienka                  | 6,76 m <sup>2</sup>  |
| 6  | pom. gospodarcze          | 1,53 m <sup>2</sup>  |
| 7  | wc                        | 1,69 m <sup>2</sup>  |
| 8  | kotłownia/pralnia         | 2,86 m <sup>2</sup>  |
| 9  | garderoba                 | 2,23 m <sup>2</sup>  |
|    | ogółem                    | 82,42 m <sup>2</sup> |
| 10 | taras                     | 16,85 m <sup>2</sup> |

